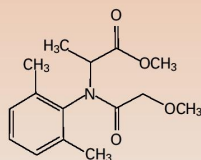
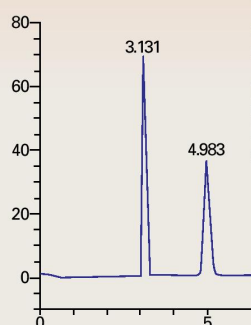


RegisCell[®]
tris-(3,5-dimethylphenyl)
carbamoyl cellulose

Metalaxyl

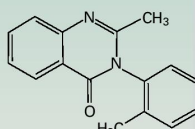


Column RegisCell[®] 5 μ m
 25 cm x 4.6 mm
 Cat.# 784104
 Mobile Phase (75/25)
 Hexane/Ethanol
 Flow Rate 1.5 mL/min
 Detection UV 254 nm
 K'_1 0.64
 α 2.54

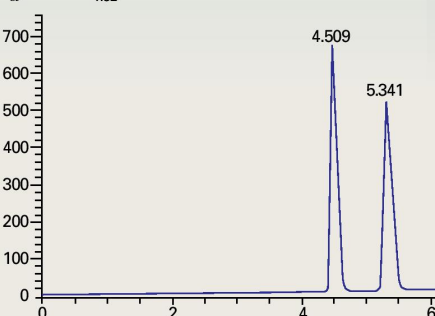


RegisPack[®]
tris-(3,5-dimethylphenyl)
carbamoyl amylose

Methaqualone

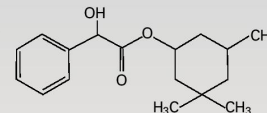


Column RegisPack[®] 5 μ m
 25 cm x 4.6 mm
 Cat.# 783104
 Mobile Phase 100% Methanol
 +0.1% DEA
 Flow Rate 1.0 mL/min
 Detection UV 254 nm
 K'_1 1.37
 α 1.32

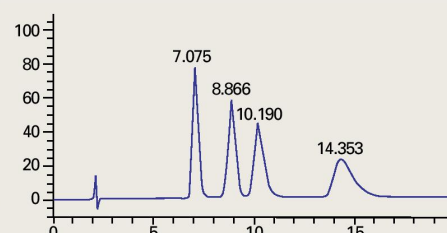


RegisPack CLA-1[™]
tris-(5-chloro-2-methylphenyl)
carbamoyl amylose

Cyclandelate



Column RegisPack CLA-1[™]
 5 μ m
 25 cm x 4.6 mm
 Cat.# 793104
 Mobile Phase (95/5)
 Hexane/Ethanol
 Flow Rate 1.5 mL/min
 Detection UV 220 nm
 K'_1 2.72
 K'_2 3.67
 α (1,2) 1.35
 K'_3 4.36
 K'_4 6.55
 α (3,4) 1.50



- Key chiral columns with the most general applicability for the separation of enantiomers
- High pressure limit (450 bar) delivers faster run times and equilibration
- RegisPack[®] and RegisCell[®] are coated phases with similar selectivities to the CHIRALPAK[®] AD and CHIRALCEL[®] OD respectively
- Ability to run under normal phase, reverse phase and SFC conditions*
- RegisPack[®] and RegisCell[®] bring new recognition abilities to Regis' chiral product range

* Consult the Regis care and use guide for full details on solvent recommendation

- NEW, coated chlorinated amylose phase
- Ability to complement other Regis chiral columns for specific separations
- Similar selectivity to the CHIRALPAK[®] AY
- Applicable for HPLC and SFC methods

RegisCell[®] tris-(3,5-dimethylphenyl) carbamoyl cellulose

Particle Size	Column Size	Part #
5 μ m	15 cm x 4.6 mm i.d.	784103
5 μ m	25 cm x 4.6 mm i.d.	784104
5 μ m	25 cm x 10.0 mm i.d.	784105
5 μ m	25 cm x 21.1 mm i.d.	784106
5 μ m	25 cm x 30.0 mm i.d.	784107
5 μ m	25 cm x 50.0 mm i.d.	784108
10 μ m	15 cm x 4.6 mm i.d.	784203
10 μ m	25 cm x 4.6 mm i.d.	784204
10 μ m	25 cm x 10.0 mm i.d.	784205
10 μ m	25 cm x 21.1 mm i.d.	784206
10 μ m	25 cm x 30.0 mm i.d.	784207
10 μ m	25 cm x 50.0 mm i.d.	784208

Also available in 20 μ m

RegisPack[®] tris-(3,5-dimethylphenyl) carbamoyl amylose

Particle Size	Column Size	Part #
5 μ m	15 cm x 4.6 mm i.d.	783103
5 μ m	25 cm x 4.6 mm i.d.	783104
5 μ m	25 cm x 10.0 mm i.d.	783105
5 μ m	25 cm x 21.1 mm i.d.	783106
5 μ m	25 cm x 30.0 mm i.d.	783107
5 μ m	25 cm x 50.0 mm i.d.	783108
10 μ m	15 cm x 4.6 mm i.d.	783203
10 μ m	25 cm x 4.6 mm i.d.	783204
10 μ m	25 cm x 10.0 mm i.d.	783205
10 μ m	25 cm x 21.1 mm i.d.	783206
10 μ m	25 cm x 30.0 mm i.d.	783207
10 μ m	25 cm x 50.0 mm i.d.	783208

Also available in 20 μ m

RegisPack CLA-1[™] tris-(5-chloro-2-methylphenyl) carbamoyl amylose

Particle Size	Column Size	Part #
5 μ m	15 cm x 4.6 mm i.d.	793103
5 μ m	25 cm x 4.6 mm i.d.	793104
5 μ m	25 cm x 10.0 mm i.d.	793105
5 μ m	25 cm x 21.1 mm i.d.	793106
5 μ m	25 cm x 30.0 mm i.d.	793107
5 μ m	25 cm x 50.0 mm i.d.	793108
10 μ m	15 cm x 4.6 mm i.d.	793203
10 μ m	25 cm x 4.6 mm i.d.	793204
10 μ m	25 cm x 10.0 mm i.d.	793205
10 μ m	25 cm x 21.1 mm i.d.	793206
10 μ m	25 cm x 30.0 mm i.d.	793207
10 μ m	25 cm x 50.0 mm i.d.	793208