

## PROTEIN-BASED CHIRAL STATIONARY PHASES

### Protein-Based Chiral Stationary Phases

Regis carries a line of protein-based chiral columns manufactured by ChromTech AB. These include:

- Chiral AGP-( $\alpha$ -glycoprotein)
- Chiral CBH-(cellobiohydrolase)
- Chiral HSA-(human serum albumin)

For additional product information and a Protein-Based Stationary Phase Application Guide, please contact Regis at sales@registech.com.

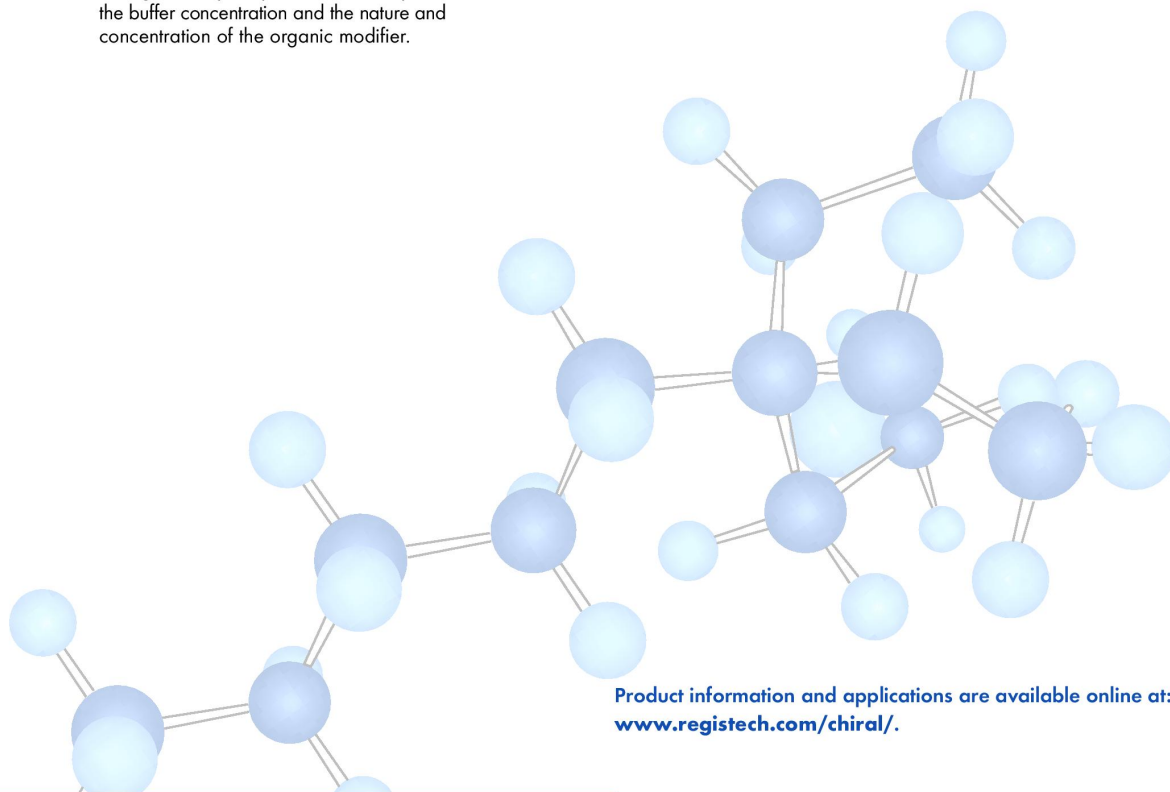
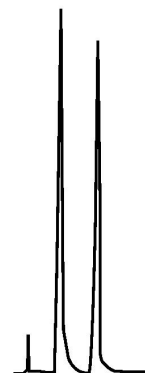
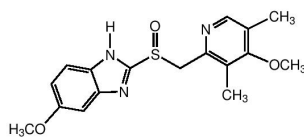
Product	Particle Size	Column Length and i.d.	Product #	U.S. Price
Chiral AGP	5 $\mu$ m	15 cm x 0.18 mm i.d.	732195	\$1,600.00
Chiral AGP	5 $\mu$ m	10 cm x 1 mm i.d.	732194	\$1,950.00
Chiral AGP	5 $\mu$ m	10 cm x 2.0 mm i.d.	732196	\$1,250.00
Chiral AGP	5 $\mu$ m	15 cm x 2.0 mm i.d.	732197	\$1,400.00
Chiral AGP	5 $\mu$ m	5 cm x 4.0 mm i.d.	732198	\$995.00
Chiral AGP	5 $\mu$ m	10 cm x 4.0 mm i.d.	732200	\$1,230.00
Chiral AGP	5 $\mu$ m	15 cm x 4.0 mm i.d.	732199	\$1,490.00
Chiral AGP	5 $\mu$ m	10 cm x 10.0 mm i.d.	732301	\$4,750.00
Chiral AGP	5 $\mu$ m	15 cm x 10.0 mm i.d.	732302	\$7,100.00
Chiral AGP				
Guard Column	5 $\mu$ m	1 cm x 3.0 mm i.d.	732300	\$135.00
Guard cartridge holder			731441	\$125.00

### Chiral AGP Micro, Analytical and Semi-Preparative Columns

Chiral AGP is the second generation chiral selector based on the  $\alpha_1$ -acid glycoprotein ( $\alpha_1$ -AGP) as the chiral stationary phase. The AGP has been immobilized on spherical, 5  $\mu$ m particles. The Chiral AGP column is typically used in the reversed-phase mode, where it can be used for the resolution of an extremely broad range of chiral compounds, such as amines, (primary, secondary, tertiary and quaternary ammonium), acids, esters, sulphoxides, amides, and alcohols. The enantioselectivity and the retention can easily be regulated by the pH of the mobile phase, the buffer concentration and the nature and concentration of the organic modifier.

### Omeprazole

<b>Column:</b>	Chiral-AGP 10 cm x 4.0 mm i.d.
<b>Mobile phase:</b>	10% acetonitrile in 10 mM sodium phosphate buffer, pH 6.5
<b>Detection:</b>	UV 210 nm
<b>Sample Conc:</b>	0.02 mg/mL
<b>Run Time:</b>	8 min



Product information and applications are available online at:  
[www.registech.com/chiral/](http://www.registech.com/chiral/).